

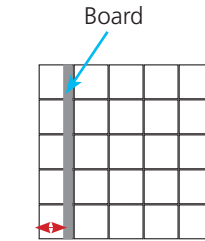
# BERGO SPORT FLOORS

## INSTALLATION ON ICE-/INLINE RINKS AND MULTI ARENAS

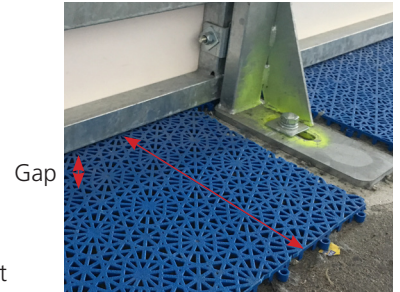
Bergo Sport floors can be installed either under the board or against it. We recommend to install UNDER the board in multi arenas and for ice- and inline rinks.

### Alt. 1 Installation UNDER the board

To avoid i.e. a puck to get stucked in the gap between the board and the floor, we recommend the floor to be installed UNDER the board with app. 20 cm margin BEHIND the board. You must leave a vertically space between board and Sport floor. The board can't be placed directly on the Sport Floor.



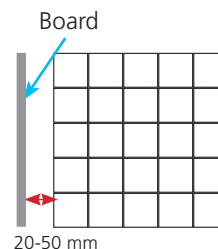
App. 20 cm  
Alt. 1. Installed Bergo Sport Floor UNDER the board.



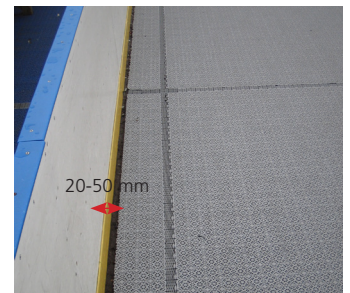
App. 20 cm behind the board.

### Alt. 2 Installation INSIDE/AGAINST the board

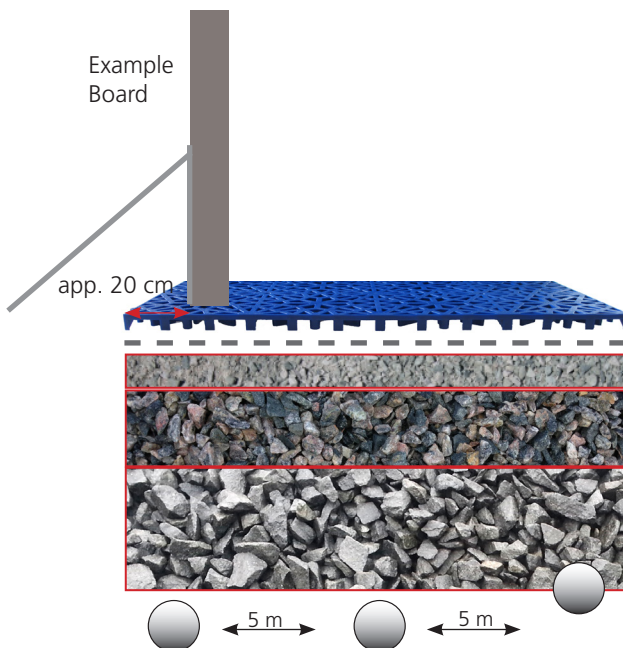
In cases where puck is not used, the floor can be installed INSIDE/AGAINST the board instead of under. Then leave a gap of app 20-50 mm between the board and the Sport Floor.



Alt. 2. Installed Bergo Sport Floor INSIDE/AGAINST the board. Leave a gap of about 20-50 mm between the board and the Sport floor.

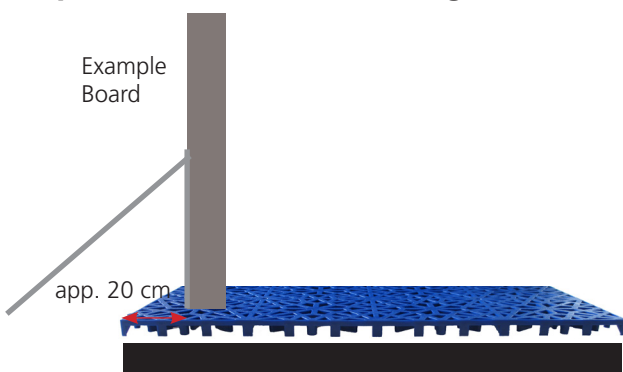


### Stone powder as subground



- **BERGO SPORT FLOOR**
- Geotextile type Tencate Geolon PP 15
- 3 cm Stone powder 0-4 mm vibrator or by water compacted
- 10 - 15 cm Macadam 0 - 32 mm
- 15 cm Macadam 32-63 mm
- Drainage Pipe Ø160 mm

### Asphalt or concrete as subground



- **BERGO SPORT FLOOR**
- Asphalt or Concrete
- Subground/filling according to the contractor's recommendations.