

# LAYING INSTRUCTION

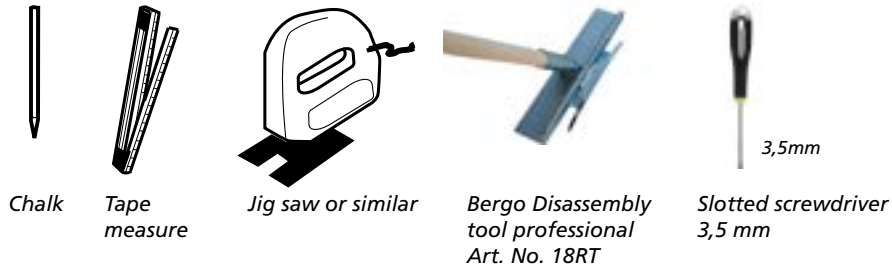
## BERGO ULTIMATE™ AND ULTIMATE PLUS™



bergo  
FLOORING



For installation you might need:

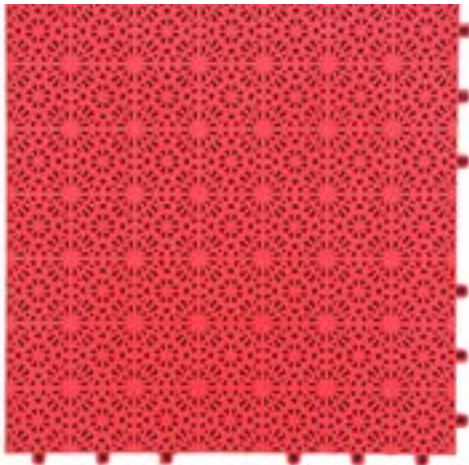


It is important that you follow this instruction for a proper functioning of your Bergo Floor.

1. Read the entire instruction carefully before installing.
2. It is important to install on correct sub ground according to our recommendation.
3. It is important that you cut the tiles against fixed object.

Drill      Chisel      Nail anchor with recessed head

### Available Items



BERGO FLOOR TILES SYSTEM 4-SERIES



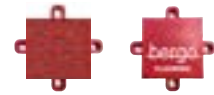
Line Strip, 375 x 50 mm (14,76 x 1.96 in)  
Art.No. 80\_\_  
Line Strip are used for making lines in different colours or/and making the area in the preferred size.



Edge Strip, 375 x 60 mm (14,76 x 2.36 in)  
Art. No. 90\_\_  
By using Bergo Edge strips and Corner strips you will give the floor an attractive and safe finish.



Corner Strip, 60 x 60 mm (2,36 x 2,36 in)  
Art. No. 91\_\_



- Line Cross-pice 50 x 50 mm (1.96 x 1.96 in)  
Art. No. 97\_\_  
Where two rows of Line strips intersect.
- Logo Line Cross-pice 50 x 50 mm (1.96 x 1.96 in)  
Art. No. 98RELOGO  
In every corner of the outer lining.



Line Strip Edge piece 60 x 50 mm (2,36 x 1,96 in)  
Art. No. 92\_\_ Is used together with the Edge strips as practical and attractive ending of a row with Line strips.



Bergo Geotextile underlay  
Recommended on stone powder.  
Art. No. BK2000



Disassembly tool  
Art. No. 18RTKIT



Multifix  
Cleaning agent  
for Bergo floors

## Preliminary work/Surface

As a base, a smooth and hard surface is recommended, such as concrete, asphalt, wooden decking, metal, or another hard surface.

With the correct surfacing work, even stone powder surface can be used, as long as it is sufficiently firm and even. See description below.

Please note! The better the surface, the better the end result.



Must be levelled off!

## Asphalt/concrete

Make sure the surface is smooth and does not have any large holes or pits that can create puddles if it rains or that might contribute to the Bergo flooring having poor contact with the surface beneath. To give a correct ball bounce it's important that the floor at all times has a good contact with the subground.

Level off and prepare the surface using a suitable method.

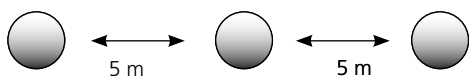


Example of laying/smoothing

## Stone Powder coating



- **BERGOTILES**
- Bergo Geotextile
- 3 cm Stone powder 0-4 mm vibrator or by water compacted
- 10 - 15 cm Macadam 0 - 32 mm
- 15 cm Macadam 32-63 mm
- Drainage Pipe Ø160 mm



## Runoff

Where sunken drains are located under the flooring surface, the level should be smoothed off with a draining structure, e.g. extra Bergo tiles. Otherwise there is a risk that tiles will become loose or break.

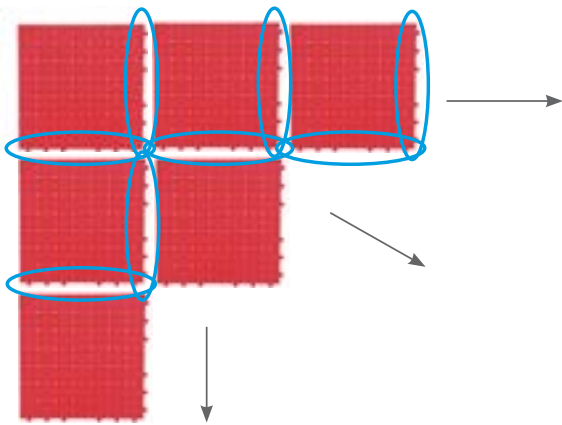
## Preparations

Clean the surface – tidy and sweep it clean.

Before installation, the flooring should be allowed to adapt to the surrounding temperature for about 24 hours. We recommend carrying out the installation at temperatures over 10°C. At lower temperatures the flooring becomes more brittle and has to be handled with care.

## Installation

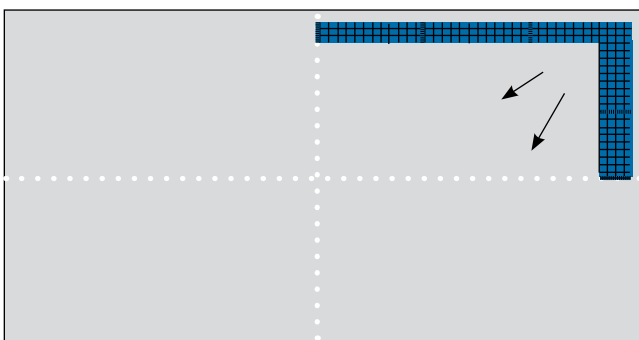
1. The connecting rings must always be laid in the same direction.



2. Fix the tiles with the joints over the protruding rings and step on it to lock. It is also fine to use a rubber mallet.



3. Lay the tiles so that they form an "L" at a 90° angle.



4. Continue laying the floor diagonally.

## Distance against fixed objects and cutting

It is important to leave a gap all around, from all fixed objects (rink, posts, walls, etc.) for the floor to expand and retract (images L, M, N). This is being done after all tiles and Line strips have been laid.

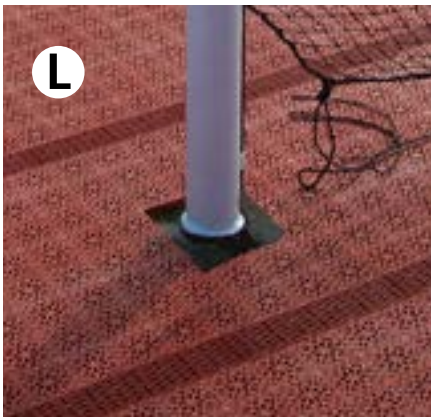
The tiles will undergo various weather conditions throughout their lifespan, which may cause them to expand or contract in response to temperature fluctuations. Due to the considerable size of the area, it is imperative to anticipate these changes to prevent any inconvenience. Therefore, to accommodate the expansion of tiles, clearance must be provided in the following areas:

- Around fixed posts
- Around walls (The tiles are preferably placed under the board where possible)
- Under Metal profiles

Leave a gap or cut tiles according to the following dimensions:

Dimensions of surface	Temperature at site	Minimum distance between tiles and fixed elements
Length: from 25 to 40 m. Width : from 15 to 20 m	10-20 °C (50-68 °F)	50 mm
	21-35 °C (69-95 °F)	30 mm
Length: from 10 to 25 m. Width: from 5 to 15 m	10-20 °C (50-68 °F)	40 mm
	21-35 °C (69-95 °F)	20 mm

For cutting, use a jig saw, band saw or bench saw.



## Installation instruction Edge strips

It is easy to attach the Edge strips. On the sides of the floortile that have protruding rings, the attached Connecting Rings that come with the edge strip are not needed. Remove them first and then mount the Edge strips.

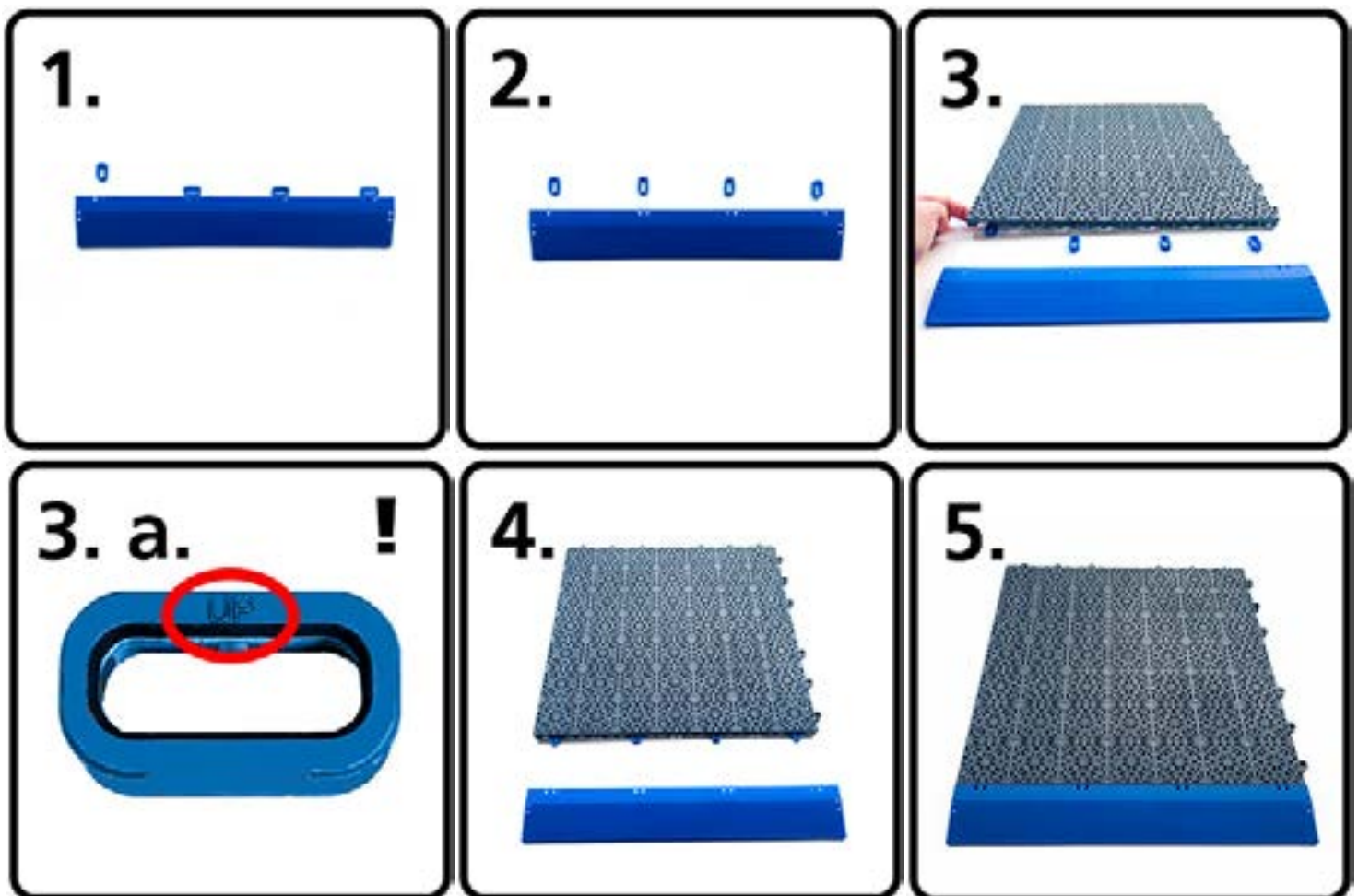
On the sides where the floor does not have rings, use the attached Connecting Rings which are loosely attached to the Edge Strips:

**1-2.** Remove the loose Connecting Rings

**3-4.** Attach the Connecting Rings to the floor tiles as shown.

**3. a.** OBS! For correct functionality, turn the loops with the text "UP" upwards (This side also has beveled edges towards the center).

**5.** Attach the Edge Strip.



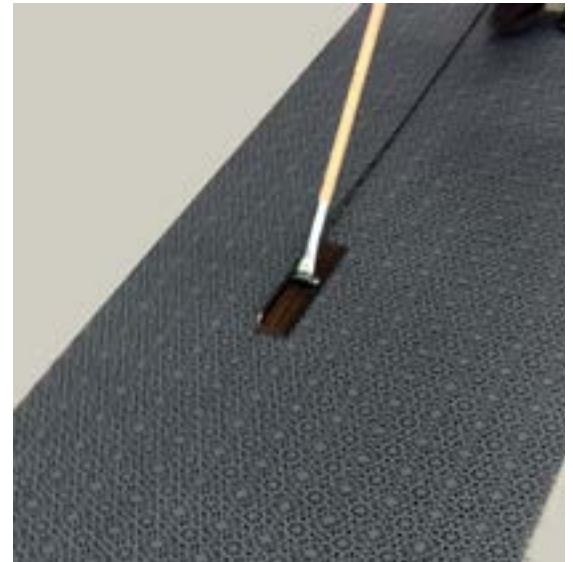
## Mistakes during installation, moving, taking up and storing a Bergo Floor.

Bergo Disassembly Tool (art.no. 18RT) has been developed for quick and easy removal e.g. at fairs, temporary events and other mobile applications. It sometimes happens that you do something wrong during installation. If that happens, use our disassembly tool to easily take it up and make adjustments.

Do not take up or install the flooring at temperatures below 10°C (50 °F). At lower temperatures the flooring becomes more brittle and has to be handled with care. Please note that the flooring can be used and left out all year round. Snow and ice will do a Bergo floor no harm!

The tool can also be used to take the flooring up for a major clean. Take the flooring up in large sections and lay them systematically in piles to make it easier to put them back in reverse order. You could mark/number the pallets for easier installation.

If the flooring is to be transported further, the sections should be laid on pallets according to their size, e.g. 2x3 tiles per sheet.



## Minimal maintenance

Bergo ULTIMATE™ and ULTIMATE PLUS™ require minimal maintenance. You can clean your surface when needed, but to maintain the properties of the area, we recommend a frequency of once a year, using a high-pressure water hose to remove dust and dirt. Of course you can also use professional cleaning equipment in public spaces and at larger installations.

## Cleaning/maintenance

### **Outdoors:**

The floor may be cleaned by high-pressure hose. If it is very dirty, use the nozzle for patio cleaning and a cleaning agent for patio or plastic floors. A leaf blower will quickly and easily remove leaves, seeds, rubbish, etc.

### **Indoors:**

Vacuuming and mopping. A wet scrubbing machine can also be used.

**For more thorough cleaning,** the floor can be taken up, see page 10, about disassembling.

### **Cleaning agents:**

We recommend our cleaning agent Bergo Multifix. The agent also removes black marks from wheels or shoes. In some cases it is also possible to use a proper cleaning agent for terrace or plastic floors.

### **Bergo Multifix**

Bergo Multifix is a well-tested cleaning agent for heavily soiled Bergo floors. Most cleaning agents can be used to remove dirt, but some are especially suited for composites.



# LAYING INSTRUCTION

BERGO ULTIMATE™ AND ULTIMATE PLUS™



**Good Luck with the installation!**

**We hope you enjoy your Bergo Floor  
many years to come.**

**[www.bergoflooring.com](http://www.bergoflooring.com)**

Feel free to send us pictures  
of your installation!  
[info@flooring.se](mailto:info@flooring.se)

If you have any questions,  
please contact customer  
services  
+46(0)371-58 77 00  
[info@flooring.se](mailto:info@flooring.se)



Proudly made in Sweden

