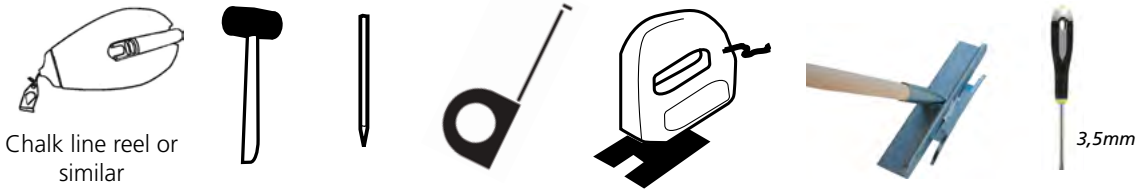


# LAYING INSTRUCTION - BERGO ULTIMATE FLOW™



For installation, you might need:



## Preliminary work/Surface

As a surface, we recommend concrete or asphalt as the primary choices. Ensure that the surface is smooth and free from large holes or pits that could create puddles when it rains or cause the Bergo flooring to have poor contact with the ground beneath. For proper ball bounce, it is crucial that the Bergo Ultimate FLOW maintains good contact with the subground at all times. Level and prepare the surface using an appropriate method.

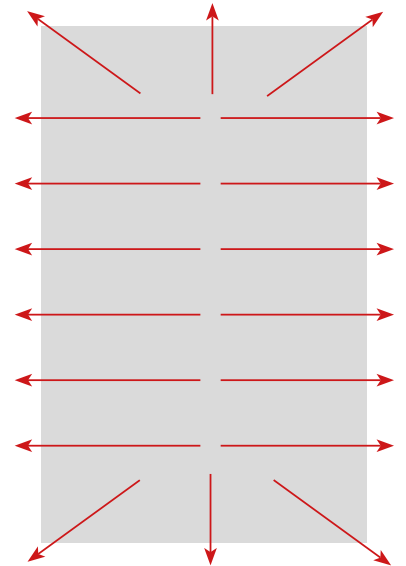
## Posts (for e.g. pickleball net, basketball hoops, goals, etc.)

The foundation should be cast when the ground work is done, and before the playing area is installed. Please note! The better the surface, the better the end result.

## Runoff

If appropriate, check that water runoff functions properly. A slope of approximately 0.5%, starting from the center of the track, is recommended. Drains should preferably be positioned outside the playing area.

Where sunken drains are located under the playing surface, the level should be smoothed with a draining structure, such as extra Bergo tiles. Otherwise, there is a risk that tiles will become loose or break, resulting in a loss of ball bounce.

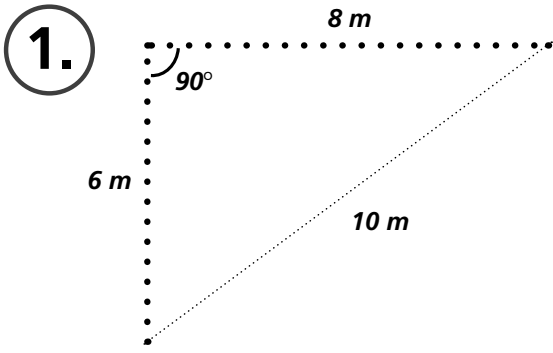


## Preparations

Clean the surface—tidy and sweep it thoroughly

Before installation, allow the Bergo Ultimate FLOW to adapt to the surrounding temperature for about 24 hours. We recommend performing the installation at temperatures above 10°C. At lower temperatures, the flooring becomes more brittle and must be handled with care.

Place pallets with the flooring just outside the playing area to avoid unnecessary movement.

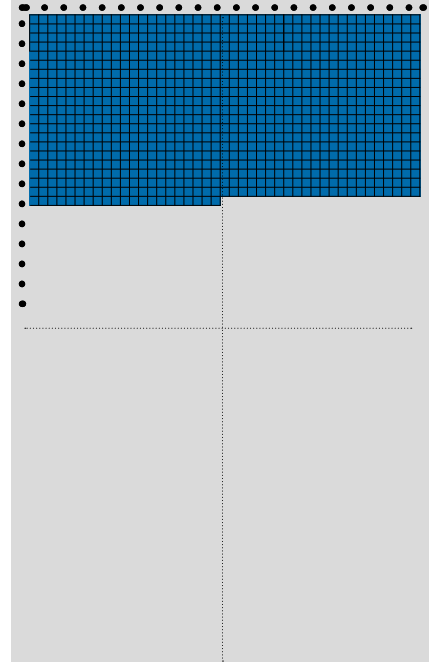


Mark the sub-ground, with a chalk line reel or similar, according to the sketch.



Use exact measurements of 6 m, 8 m, and 10 m to create a 90-degree angle to follow.

2.

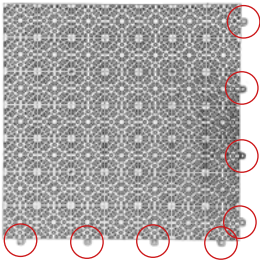


Install the tiles row by row.

Measure frequently during installation to ensure the area is straight and at a right angle.



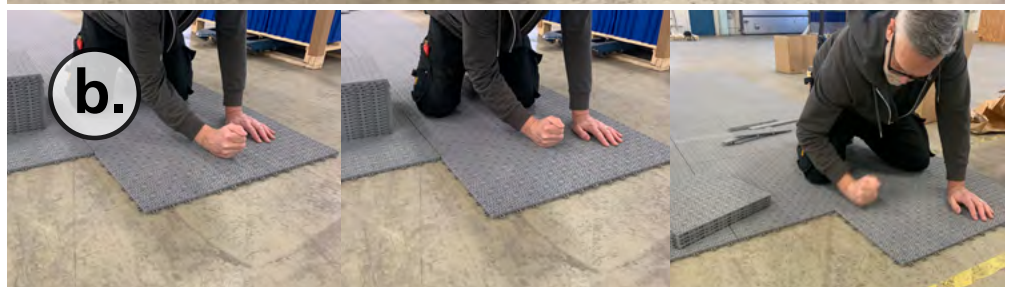
During installation, if you notice that the gaps between the tiles are too tight and it's challenging to fit them together, it is likely because the court is not perfectly straight or at a right angle. To correct this, adjust the entire surface by pulling it from the outer edge.



**Always install with the connection rings in the same direction.**

a. Fix the tiles by inserting the male pegs into the protruding rings.

b. Tap them gently together by hand or with a rubber mallet.

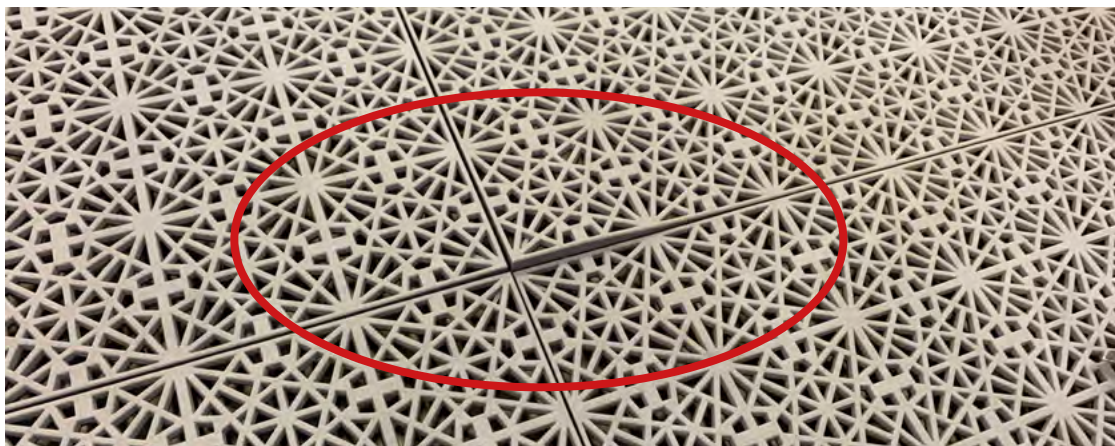


Do not step on the tiles to connect the tiles, as this may cause the pegs to bend, if they are not properly aligned with the protruding rings.

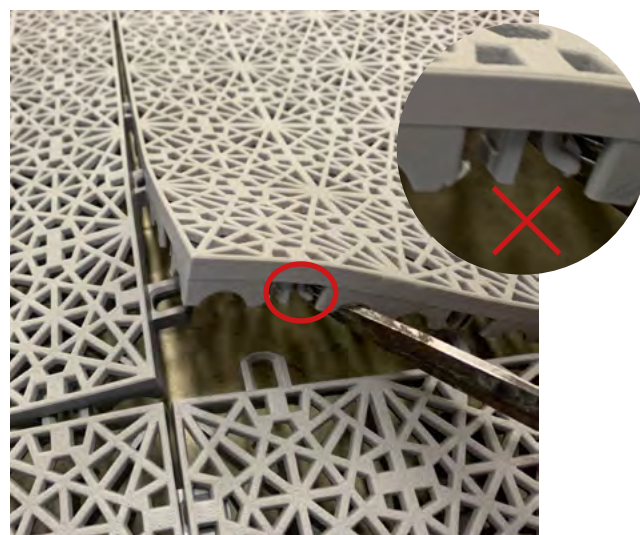


## Mistakes during installation

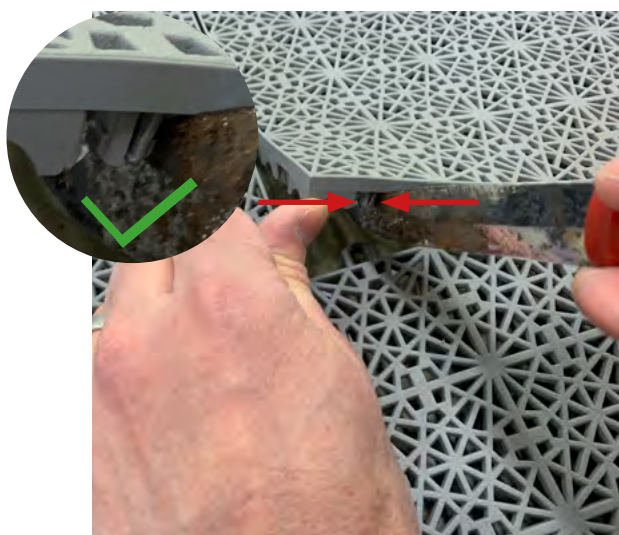
If the floor cannot be assembled in some places, it is likely because the connection joints have not been inserted into the loops correctly. The connection joint has two legs that may have separated and need to be straightened.



Lift up the tile with a screwdriver or similar.



As you can see the connection joint is split up.



Push the connection joint in place.



Re-connect the tile. Finished!

# LAYING INSTRUCTION

BERGO ULTIMATE FLOW™



**Good Luck with the installation!**

**We hope you enjoy your floor  
many years to come.**

**[www.bergoflooring.com](http://www.bergoflooring.com)**

Feel free to send us pictures  
of your installation at  
[info@flooring.se](mailto:info@flooring.se)

If you have any questions,  
please contact customer  
services  
+46(0)371-58 77 00  
[info@flooring.se](mailto:info@flooring.se)

