

LAYING INSTRUCTION

BERGO ULTIMATE FLOW™



1. Before starting the installation, it is important to carefully read the entire installation manual.

2. Ensure that the substrate and surroundings meet the correct conditions and follow all steps in the correct order. Proper preparation will create the best possible foundation for installing Bergo Ultimate FLOW™ and will ensure long-lasting performance and optimal function.

3. Take pictures for future records:

a. Before the installation starts b. During installation c. After installation.



LAYING INSTRUCTION - BERGO ULTIMATE FLOW™



PRELIMINARY WORK

Substrate requirements

As a substrate, we recommend concrete. Ensure that the surface is smooth and free from large holes or pits that could create puddles when it rains or cause the Bergo flooring to have poor contact with the ground beneath. For proper ball bounce, it is crucial that the Bergo Ultimate FLOW™ maintains good contact with the subground at all times. Level and prepare the surface using an appropriate method.

High-friction surfaces

Too high friction between tiles and substrate may prevent the tiles' natural movement when temperature varies.

This may apply to rubber and certain types of asphalt or similar. If installation on such substrates is necessary, we recommend using a geo-textile underlay to ensure proper function. Please consult with us if needed.

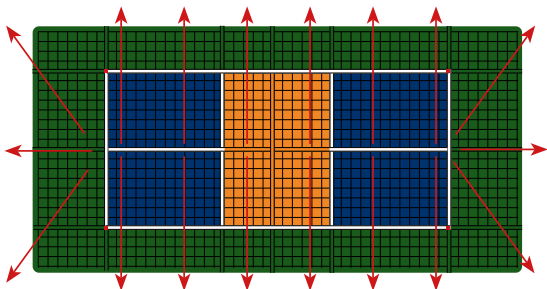
Posts and foundations

The foundation should be cast once the ground work is completed, and before installing Bergo Ultimate FLOW™. Please note: the smoother the surface, the better the end result..

Drainage considerations

If appropriate, check that water runoff functions properly. A slope of approximately 0.5%, starting from the center of the court, is recommended. Drains should preferably be positioned outside the playing area.

Where sunken drains are located under the playing surface, the level should be smoothed with a draining structure, such as extra Bergo tiles. Otherwise, there is a risk that tiles will become loose or break, resulting in a loss of ball bounce.



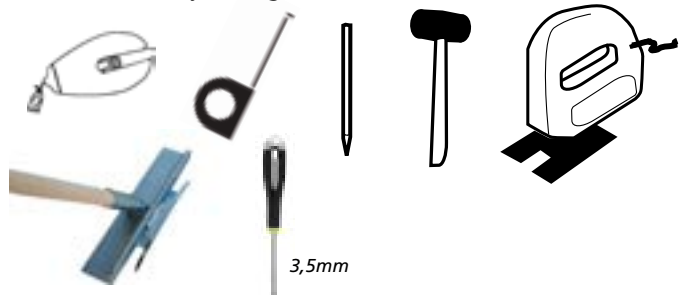
Surface preparations

Clean the surface tidy and sweep it thoroughly.

Before installation, allow the Bergo Ultimate FLOW™ to adapt to the surrounding temperature for about 24 hours. We recommend performing the installation at temperatures above 10°C. At lower temperatures, the flooring becomes more brittle and must be handled with care.

Place pallets with the flooring just outside the playing area to avoid unnecessary movement.

For installation, you might need:

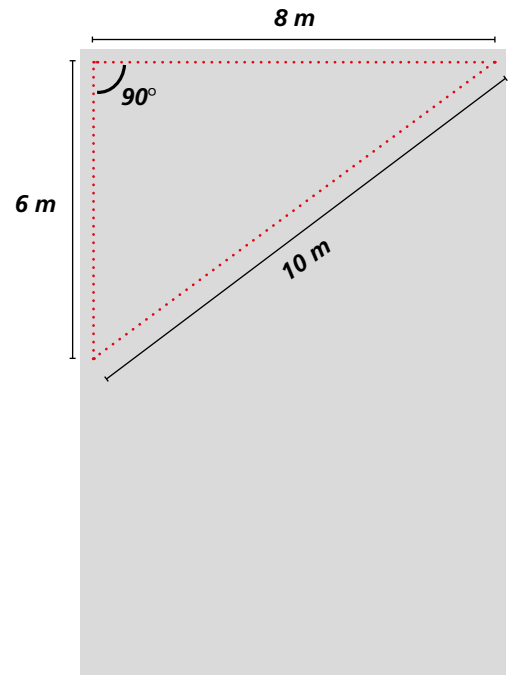


INSTALLATION

1

Make sure to install the floor at a right angle (90°).

For instance, use a chalk line reel or similar tool to measure the angle, according to the example.



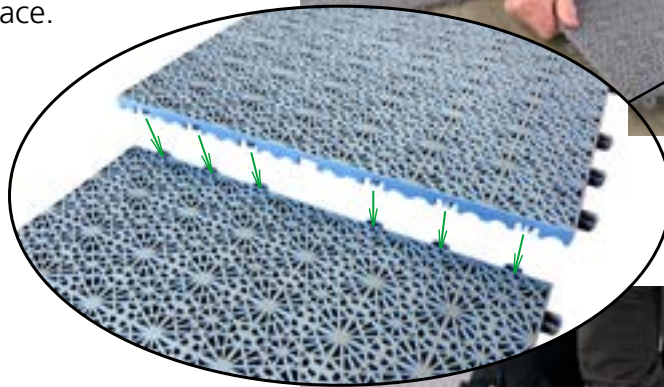
2

A. Position the tiles so that the male pegs are placed directly above the protruding rings.

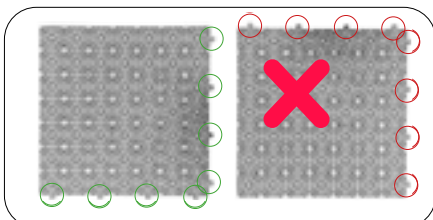
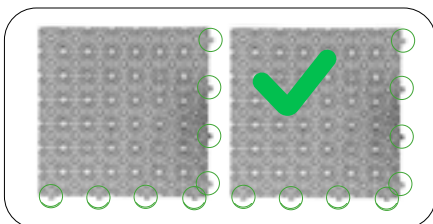
B. Then press the tiles together by hand or with a rubber mallet until all the connections are fully pressed down and the tiles lie flat against the surface.



A



B



Do not step on the tiles to connect the tiles, as this may cause the male pegs to bend, if they are not properly aligned with the protruding rings.

3

Start in the corner. Install the tiles row by row.

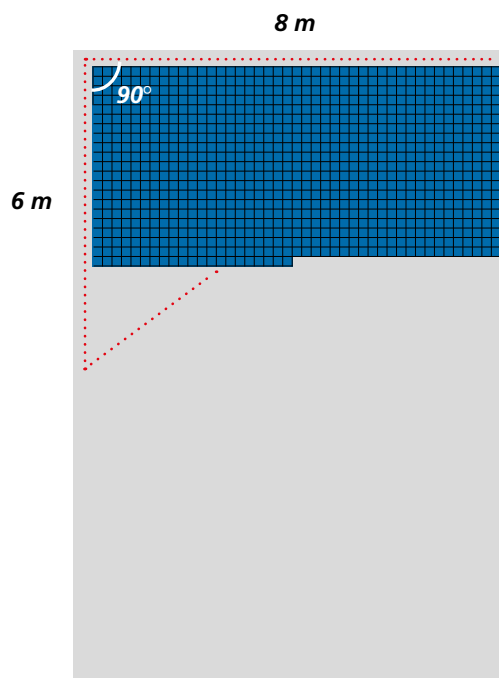
Measure frequently during installation to ensure the area is straight and at a right angle.



During installation, if you notice that the gaps between the tiles are too tight and it's challenging to fit them together, it is likely because the court is not perfectly straight or at a right angle.

To correct this, adjust the entire surface by pulling it from the outer edge.

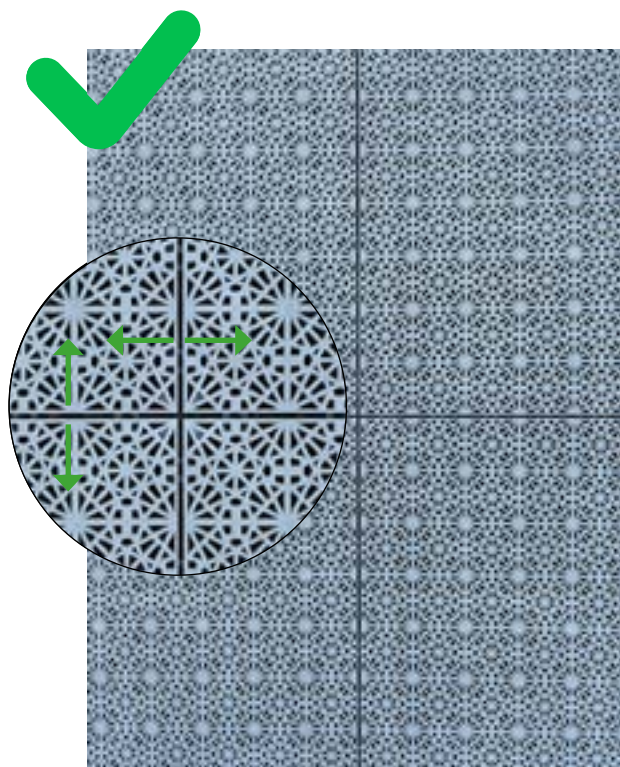
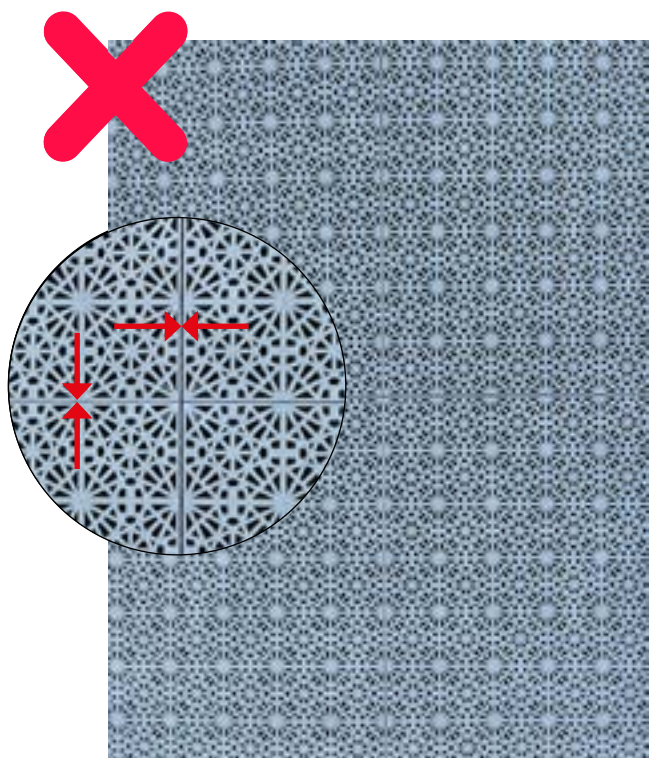
Please consult with us if needed.



IMPORTANT! Leave gaps during installation.

You need to pull apart the tiles with a gap between each tile during installation. This needs to be ensured in all directions of the tiles.

If you install the tiles too tight or without a gap, the floor will have some challenge to expand.



ACCESSORIES (SOME OPTIONAL)



Line Strip, 375 x 50 mm (14,76 x 1.96 in)
Art.No. 81__

Line Strip are used for making lines in different colours or/and making the court in the preferred size.

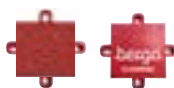


Edge Strip, 375 x 60 mm (14,76 x 2.36 in)
Art. No. 90__

By using Bergo Edge strips and Corner strips you will give the floor an attractive and safe finish.



Corner Strip, 60 x 60 mm
(2,36 x 2,36 in)
Art. No. 91__



• Line Cross-piece
50 x 50 mm (1.96 x 1.96 in)
Art. No. 93__

Where two rows of Line strips intersect.

• Logo Line Cross-piece
50 x 50 mm (1.96 x 1.96 in)
Art. No. 98RELOGO

In every corner of the outer lining.



Line Strip Edge piece
60 x 50 mm (2,36 x 1,96 in)
Art. No. 92__

Is used together with the Edge strips as practical and attractive ending of a row with Line strips.



Bergo Geotextile underlay
Recommended on stone powder.
Art. No. BK2000



Disassembly tool with shaft
Art. No. 18RTKIT

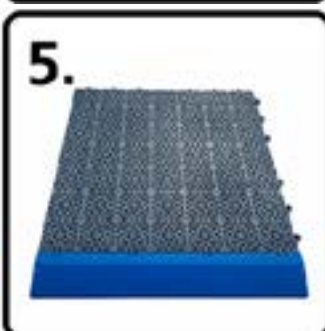
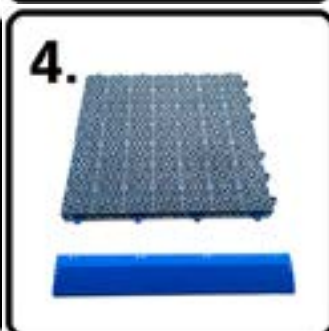
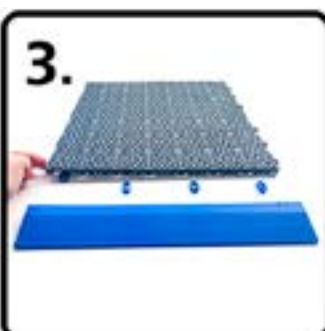
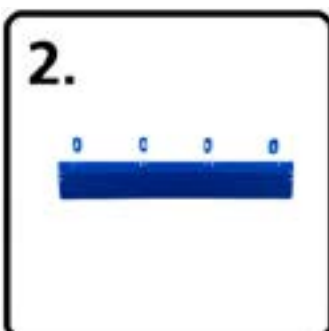
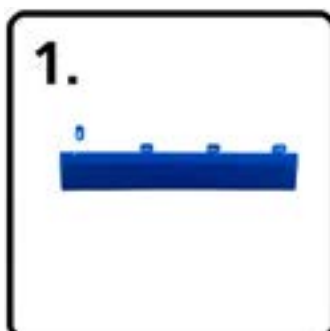
Installation instuction Edge strip

It is easy to attach the Edge strips.

On the sides of the floortile that have protruding rings, the attached Connecting Rings that come with the edge strip are not needed. Remove them first and then mount the Edge strips.

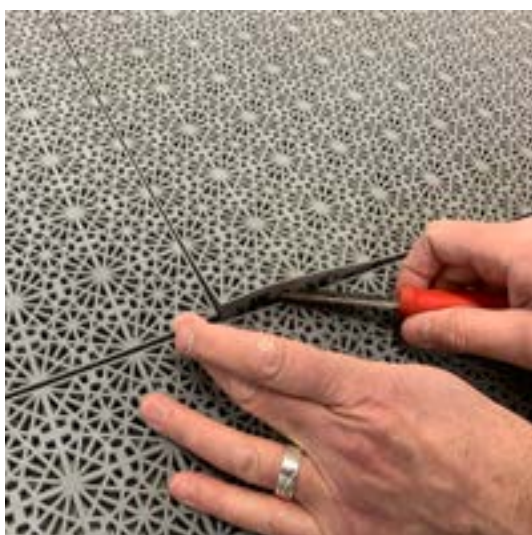
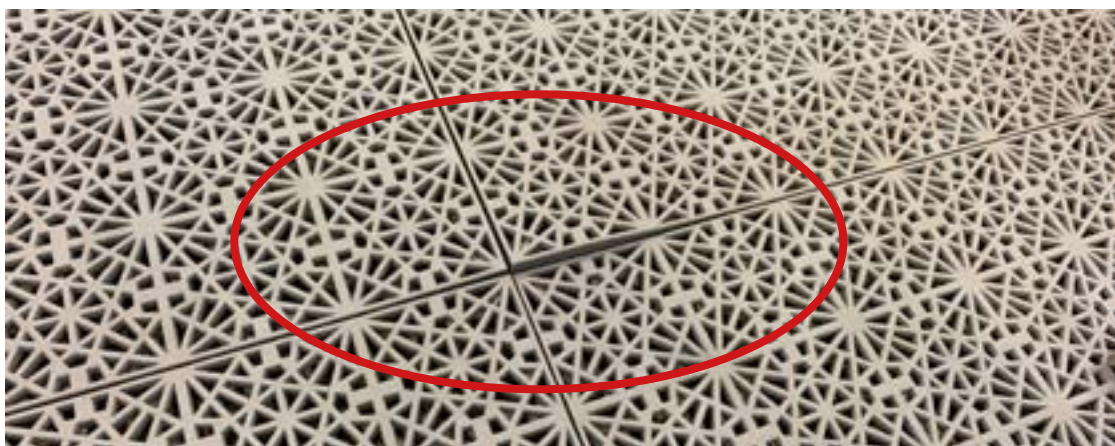
On the sides where the floor does not have rings, use the attached Connecting Rings which are loosely attached to the Edge Strips:

- 1-2. Remove the loose Connecting Rings
- 3-4. Attach the Connecting Rings to the floor tiles as shown.
3. a. OBS! For correct functionality, turn the loops with the text "UP" upwards
(This side also has beveled edges towards the center).
- 4-5. Attach the Edge Strip.

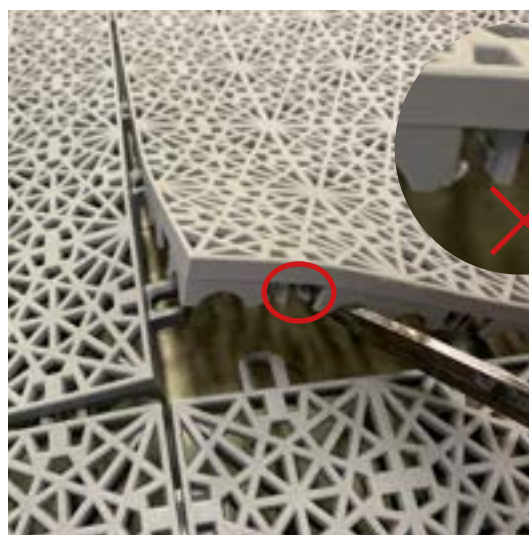


Misstakes during installation

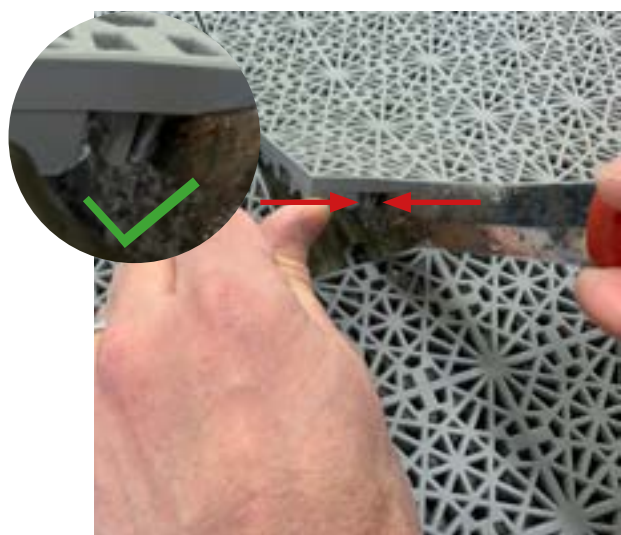
If the floor cannot be assembled in some places, it is likely because the male pegs have not been inserted into the loops correctly. The male pegs have two legs that may have separated and need to be straightened.



Lift up the tile with a screwdriver or similar.



As you can see the male peg is split up.



Push the male peg in place.



Re-connect the tile. Finished!



**Good Luck with the installation and we hope
you enjoy your floor many years to come.**

www.bergoflooring.com

If you have any questions, please
contact customer service
+46(0)371-58 77 00
info@flooring.se

Feel free to send us pictures of your installation
to info@flooring.se



Safety instructions: Use only on stable and flat surfaces to avoid risk of accidents.
Designed for usage as sportfloor. Suitable for all ages.

Proudly made
in Sweden



www.bergoflooring.com

